



Partnership for the
**DELAWARE
ESTUARY**

2023 ANNUAL REPORT

Photo by Susan Rogozinski

Connecting people, science, and nature
for a healthy Delaware River and Bay

MESSAGE from the EXECUTIVE DIRECTOR

Dear Friends,

2023 was a big year for the Partnership for the Delaware Estuary. With funding from the Bipartisan Infrastructure Law, we made some big progress on a few passion projects and provided support to other organizations doing great work to implement the Delaware Estuary Program priorities. A few of these proud accomplishments include recycling over 120,000 pounds of oyster shells. This shell will be used in living shorelines that protect critical habitats from the impacts of sea level rise. Our scientists placed 6,000 baby freshwater mussels into ponds where they will grow, filter water, and provide a multitude of ecosystem services. With the help of student volunteers, hundreds of plants were placed in a 1,000 square foot rain garden at a local high school where they will grow and flourish for years to come. Finally, we are proud to have started a funding assistance program to support organizations doing green projects in historically underserved communities. We look forward to seeing their vision and projects come to life in the coming months.

All of these impactful activities would not have been possible without the commitment of PDE's Board of Directors, staff, partners, and supporters from across the region. **THANK YOU** for helping make last year a success!

Looking ahead, we are excited to continue our work to improve the health and future of the Delaware River and Bay, and expand partnerships that are focused on Clean Waters, Healthy Habitats, and Strong Communities.

In gratitude for your ongoing support,

Kathy Klein

Kathy Klein, Executive Director



Photo by Kurt Cheng

Photo by Lisa Timbers

2023 BOARD of DIRECTORS

EXECUTIVE COMMITTEE

Chair: Nicole E. Brown – Suburban Consulting Engineers, Inc.

Vice Chair: Craig P. Durand – TTI Environmental, Inc.

Treasurer: Jill E. Voorhees – Mativ, Inc.

Secretary: Jeffrey Pantazes – AKRF

Helen L. Gregory – PSEG Nuclear, LLC

Ronald B. Heun, Jr. – PSEG Nuclear, LLC

BOARD MEMBERS

Kelly Anderson – Philadelphia Water Department

Karen Caiola – The Michaels Organization

Kate Campbell – Manko, Gold, Katcher & Fox, LLP

Katherine S. Eberhart – Ørsted

Patricia Elkis – Delaware Valley Regional Planning Commission

Matin Katirai – West Chester University

Jeannie Morris – Vicinity Energy

Scott T. Northey – The Chemours Company

Shawn Rodier – Jacobs

Krista Seng – Aqua, an Essential Utilities Company

David Small – Verdantas

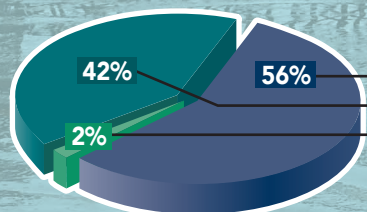
Eric Wentz – Covanta



Surveying freshwater mussels in the Delaware River with the Philadelphia Water Department.

2023 STATEMENT of ACTIVITIES*

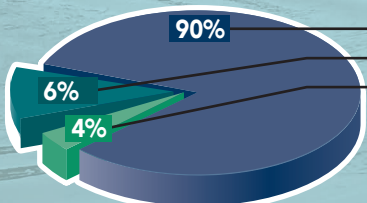
FOR THE YEAR ENDED DECEMBER 31, 2023



Support and Revenue:

Government Grants and Contracts.....	\$1,942,286
Contributions and Grants.....	\$1,475,916
Other Revenue.....	\$ 72,661

TOTAL SUPPORT AND REVENUE.....\$3,490,863



Expenses:

Program Services.....	\$3,056,333
Management and General.....	\$ 189,091
Fundraising.....	\$ 148,525

TOTAL EXPENSES.....\$3,393,949

Change in Net Assets.....\$ 143,632

Net Assets at December 31, 2022.....\$1,562,043

Net Assets at December 31, 2023.....\$1,705,675

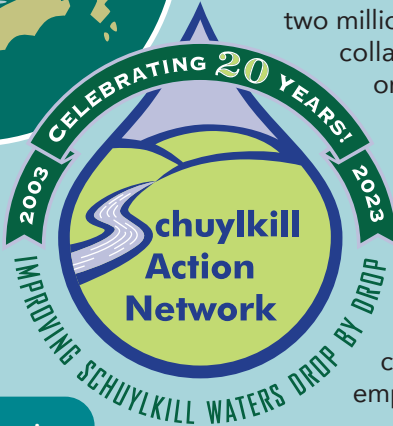
*Audit not completed at time of publication.

Please remember
PDE in your giving!



CLEAN WATERS:

20th Anniversary of SAN



The Schuylkill River is the largest tributary to the Delaware River. Flowing 135 miles from Pottsville to Philadelphia, this important waterway supplies drinking water for roughly two million people. The **Schuylkill Action Network (SAN)** is a watershed-wide collaborative network of over 900 members and 300 diverse partner organizations working together to improve water resources in the Schuylkill River Watershed. With funding from the Philadelphia Water Department and Aqua, PDE staff coordinate meetings, tours, and events, and facilitates the day-to-day operations of the SAN.

In 2023 we celebrated the 20th Anniversary of the SAN! Nearly 80 partners from numerous organizations across multiple sectors came together to celebrate this milestone at the SAN Annual Meeting at Elmwood Park Zoo in Norristown, PA. The meeting highlighted collaborative success over the years and emphasized the role of partnerships.

Schuylkill River Restoration Fund bus tour participants learn about a water infrastructure project.

The SAN MVP award was presented to Krista Seng at the 20th Anniversary meeting.



HEALTHY HABITATS:

Shell Recycling

You may not think about it often, but there is an oyster shell shortage in our region. Since 2016, PDE's Shell Recycling Program's goal has been to return oyster shells to the estuary waters in order to stabilize shorelines and create habitat. The recycling process involves picking up shell from restaurants in Wilmington, DE and Philadelphia and transporting it to one of our two recycling locations. Once there, the shell is piled up and exposed to the elements to cure for at least six months. After curing, the shell is ready to be bagged and we enlist the help of volunteers. Volunteers are an integral part of the program, to help us prepare the shell for use in living shoreline restoration projects and throughout the estuary.

(Continued on next page)



Bagging oyster shells for Living Shoreline Restoration.

In 2023, PDE collected over 65,000 lbs. of shell from 14 restaurant partners. We also received a donation of 30,000 lbs. of shell from the Delaware Center for the Inland Bays. The combined weight of all that oyster shell is equivalent to nearly 4 school busses! Last year, through public and small group events, 69 volunteers helped us create over 3,400 shell bags!

To learn more or get involved, visit <https://delawareestuary.org/shell-recycling>.

Volunteers participate in a shell-bagging event.



Shell bags placed along the edge of the Mispillion River along Delaware Bay to stabilize the streambank.



First Place: Fishing for Trash Free Waters by Helen Munnally.

STRONG COMMUNITIES:

Trash Free Waters Art Contest

In conjunction with the Delaware River Festival, and with funding from the United States Environmental Protection Agency (EPA), PDE held the 2023 Trash Free Waters Art Contest. Artists from across the region were invited to participate by creating an original piece of artwork. The primary goals of the contest were to bring awareness to the problem of aquatic trash and to highlight how people can be part of the solution.

Local artists submitted 67 original pieces of artwork, which were displayed inside the Independence Seaport Museum during the Delaware River Festival in September. The public was able to choose the winners, and an estimated 600 festival attendees voted on their favorite submissions. The first place piece of artwork will be used in an upcoming advertising campaign at Septa and PATCO stops in Philadelphia to help spread the message about keeping trash out of our waterways.



Delaware River Festival participants vote for their favorite artists.



2023 FUNDERS, SPONSORS, and DONORS

The Partnership for the Delaware Estuary thanks everyone who supported our work with contributions, grants, event sponsorship, cooperative agreements, and donations.

GRANTS, CONTRACTS, & PROJECT FUNDING SUPPORT

Academy of Natural Sciences of Drexel University
American Planning Association, Delaware Chapter
American Rivers
Apsona
Aqua America, Inc.
Aqua Pennsylvania, Inc.
Atlantic Capes Fisheries
Ballard Spahr
Betsy's Cape Shore Salts
Bivalve Packing Company
Camden County Municipal Utilities Authority
Canva
Center for Aquatic Science
Center for Research in Wind
Centers for Disease Control and Prevention
Christina Brandywine River Remediation Restoration Resilience
City of Wilmington
City of Wilmington, Green Jobs
Collaborate Northeast
Constellation Energy Generation, LLC
Defense Advanced Research Projects Agency
Delaware Center for the Inland Bays
Delaware Community Foundation
Delaware Department of Natural Resources and Environmental Control
Delaware Department of Transportation
Delaware National Estuarine Research Reserve
Delaware Nature Society
Delaware River Basin Commission
Delaware Sea Grant
Delaware Technical Community College
Delaware Valley Regional Planning Commission
Delaware Water Infrastructure Advisory Council
Discovery Center
Dr. Susan S. Kilham Research Fund

Drexel University
DuPont Clear into the Future
Eastern Highway Specialists
EDiS
Energy Transfer/Sunoco Foundation
Esri
Essential Foundation
Exelon Foundation
Fairmount Water Works Interpretive Center
Fishtown Seafood
Fork Restaurant
George, Miles & Buhr, LLC
Geraldine R. Dodge Foundation
Google Ads
GreenWeaver Landscapes, LLC
H. Fletcher Brown Boys & Girls Club
Habitat for Humanity of New Castle County
Habithèque Inc.
HDR, Inc.
Hilco Redevelopment Partners
Independence Seaport Museum
John Bartram Association
Kensington Quarters
Klein Paul Fund
Leading Light Wind
Lenape Indian Tribe of Delaware
Longwood Gardens
MailChimp
Mercer County Parks Commission
Misconduct Tavern
Museum of Science and Industry Chicago
National Fish and Wildlife Foundation
National Oceanic and Atmospheric Administration
National Sea Grant
Natural Lands
Nature Conservancy, Delaware
New Castle County
New Jersey Department of Environmental Protection

New Jersey Marine Sciences Consortium
New Jersey Sea Grant
NV5
Olde Bar
PECO Energy Company
Pennsylvania American Water
Pennsylvania Coastal Resources Management Program
Pennsylvania Department of Environmental Protection
Pennsylvania Fish and Boat Commission
Pennsylvania Infrastructure Investment Authority (PENNVEST)
Pew Charitable Trust
Philadelphia Water Department
Post Haste
Project ABLE, University of Delaware Blue Tech
PSEG Foundation
PSEG Power LLC
Resource Environmental Solutions, LLC
Rutgers University
Rutgers University, Haskin Shellfish Research Laboratory
Salem County Career & Technical High School
Salesforce Foundation
Sansom Street Oyster House
Schuylkill River Restoration Fund
Stantec Consulting Services, Inc.
Stevens Institute of Technology
Sussex County Council
Sweet Amalia Oyster Farm
Tudor Consulting
U.S. Department of Agriculture
U.S. Department of Defense
U.S. Environmental Protection Agency
U.S. Fish and Wildlife Service
University of Delaware
University of Delaware, Environmental Club
University of Maryland
University of Maryland Environmental Finance Center
Upper Montgomery Joint Authority
Vernick Fish
Wakerfern Foundation
Water Resources Association of the Delaware River Basin
Westside Grows Together
Wildlife Acoustics
William Paterson University
William Penn Foundation
Winterthur Museum, Garden, and Library
WRT
Yamaha Rightwaters



Photo by Kristen Cooney



2023 EXPERIENCE THE ESTUARY CELEBRATION SUPPORTERS

Adventure Aquarium
Aqua
Atlantic Capes Fisheries
Barclay Prime
Brandywine Brewing Company
Tavern & Grill
Bivalve Packing Company
Brandywine River Museum of Art
Nicole Brown
Haley Burns
Iris Burt
Caesars Entertainment
Kate Campbell
Chaddsford Winery
Constellation
Delaware Museum of Nature
& Science
Roy Denmark
Dogfish Head Craft Brewed Ales
Kevin Donnelly
Craig Durand
Eastern State Penitentiary
Katie Eberhart
Fork
The Grand
The Grand Review
Jenn Gius
Helium Comedy Club
Elizabeth Horsey
Ron Huen
Judy Hykel
JLL
Kathy Klein & David Paul
Jecy Klinkam
Ed Lewandowski
Lewes Cycle Sports
Longwood Gardens
Hali McLaren – HKM Jewelry
Moshulu
Emily McGurk
McQuillan family
Frank McShane & Vanessa Fenton

Jeannie Morris
Mt. Cuba Center
Northland Airboats
Nola & Luna O'Connell
Kerry & Patrick O'Connell
Ørsted North America
Jeff Pantazes
Philadelphia Distilling Company
Philadelphia Union
Quest Adventures
Rick Steves' Europe, Inc.
Shawn Rodier
Kendra Scott
Krista Seng
Sever Glassworks
Shake Shack
Jenny Shinn
Cyndi Slothour
David Small
SoDel Concepts
Sweet Amalia Oyster Farm
Joe & Janine Tarsavage
Total Wine & More
Robert G. Traver
Jill Voorhees
Winterthur
Lisa Wool

2023 EXPERIENCE THE ESTUARY CELEBRATION SPONSORS

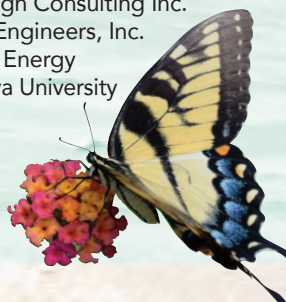
AKRF
Aqua, an Essential Utilities
Company
Artesian Water Company
Brown and Caldwell
Calpine
Cape Atlantic Conservation
District
Chemours
Constellation
Delaware River & Bay Authority
Delaware River Basin Commission
Delaware Valley Regional
Planning Commission

DSM Firmenich
Ecotone, LLC
Energy Transfer
Exelon Corporation
Hazen and Sawyer
HDR
Jacobs
Manko, Gold, Katcher & Fox, LLP
Maritime Academy Charter School
Monroe Energy
Mott MacDonald
New Castle Conservation District
Philadelphia Regional Port
Authority
Philadelphia Water Department
Pilot's Association for the Bay
and River Delaware
PSEG
Ramboll
Rutgers University, Haskin Shellfish
Research Laboratory
Suburban Consulting Engineers
TRC Environmental
TTI Environmental, Inc.
University of Pennsylvania,
Master of Environmental Studies
Urban Engineers
US Wind
Veolia
Verdantas
Vicinity Energy
WSP

2023 SCIENCE SUMMIT SPONSORS

American Water
Delaware Department of Natural
Resources and Environmental
Control
Delaware River & Bay Authority
Delaware River Basin Commission
Delaware Sea Grant
Delaware Valley Regional
Planning Commission
Drexel University
The Energy Transfer/Sunoco
Foundation
Hazen and Sawyer
Monroe Energy
New Jersey Corporate Wetlands
Restoration Partnership
New Jersey Department of
Environmental Protection
Ørsted North America
Pennsylvania Department of
Environmental Protection
Philadelphia Water Department
Pinelands Nursery
PSEG Services Corporation
Sovereign Consulting Inc.
Urban Engineers, Inc.
Vicinity Energy
Villanova University

Photo by
Patricia
Land



2023 DONORS

(Campaign year – January 1, 2023
through December 31, 2023)

\$5,000 and Above

Curtis W. McGraw Foundation
Kathy Klein & David Paul
Estate of Susan S. Kilham
Morgan Family Foundation
Janet Yabroff

\$1,000 to \$4,999

Kate Campbell
Frances B. Carter
Tom & Melina Ei
Patricia Elks
Douglas and Maureen Miller
Monroe Energy
The Oyster House
George F. Phelps
Krista Seng
David & Cindy Small
Jill Voorhees & Mark Corrigan
Brian Yerger

\$500 to \$999

Anonymous (2)
Steven & Colleen A. Arnold
Christian Castillo
Durand Family
Katie Eberhart
The Essential Foundation
Helen Gregory
Ron Heun Jr.
Elizabeth Horsey
Gus Mergenthaler
Jeannie & Eleazar Morris
Hiram H. Munger
Alan Paul & Rebecca Blumenstein
Thomas C. Roberts
Shawn Rodier
Matthew Sarver
Joseph & Janine Tarsavage
Robert J. Valihura & Debbie Pace
Vanguard
Eric Wentz
Tracey Whitesell & Terrance Huettl
Zoroastrian Association of
Pennsylvania and New Jersey

\$250 to \$499

John Burghardt
David Bushek
Constellation Energy Generation, LLC
Roy Denmark & Judy Hykel
Robert D. Goldman PG
Vincent & Jeanette Gorman
Martha Hays
Andrew Homsey
Ann Baker Horsey
Jacobs Engineering Group, Inc.
Daniel J. Martin
Joe & Jeanne McAtee
Debra McCarty & Richard Stasiorowski

Frank McShane &
Vanessa Fenton
Scott Northey
Octoraro Native Plant Nursery
Jeffrey & Lynn Pantazes
Michael J. Pickel &
Leah Gaffney
Dawn Rittenhouse
Flavia Williams Rutkosky
Alexandra Seibert
Marshall Taylor
TTI Environmental
Warren Environmental Counsel
LLC
Fred Wood

\$100 to \$249

Anonymous (4)
AmazonSmile Foundation
Buzz & Kathy Adkins
Juni Alam
Charles App
Ronald G. Ashley
John Balletto
Ed & Ridgely Biddle
Bernie Bittner
Nicole Brown
Michele Buckley
Josef & Hilde Burger
Karen Caiola
Peter Calder
Cape May-Lewes Ferry
The Honorable Tom & Mrs.
Martha Carper
Steven & Margaret Castorani
Julie Varner & Thomas
Chegwidden
Edward W. Christoffers
George & Karen Cook
Jeanne & Burt Doremus
Earthshare
Jeff Fleming
Karen & Kyle Forst
Lesley Fuchs
Catherine Gatenby
Marc & Sharon Gold
Beth & Warren Haas
Debra Harris
Bruce M. Hashinger III
Keiran Haywood
Michael Hogan
Robert J. Holliday
James E. Hook & Wen Chyi Shyu
Edmond Horsey
George Horvath
Rich & Salli Innes
Larry Irelan
Judi Jeffers
Robert Kahley
Melanie J. Kilgannon
Dave & Bonnie Kitts
George Krupanski
Robert G. Locke & Sarah
Thorne-Locke



Photo by
Rebecca
Reynolds

Kimberly Long
Timothy Long
Jonetta Lucas
Joan Mason
Martha Maxwell-Doyle
Shawn McGlinchey
Barbara Monegan
Anne M. Murphy
Dr. Ken Najjar
Pamela J. Nelson
Christopher Obropta
David Othmer
Ellen & Stephen Pearlman
Michael Pro
Lawrence Lindsay & Carla Puppini
Susan Raison
Giorgio Ramacciotti
William & Loren Reichert
Courtney Richmond
Jonathan & Carla Rinde
Meghan & Michael Rogalus
Dave & Deb Rossetti
Sari Rothrock
Charles W. & Nancy M. Sapp
Patricia Saybolt
Mary Ellen & Robert T. Scott
Jonathan & Gwyneth Sharp
Andy Shea
James & Eileen Shissias
Carol Spiker
Louisa Hill Spottswood
Kash Srinivasan
Ann Tegnell
Stephen Thompson
Virginia Thompson &
Thomas Shaffer
Bob Tudor
Jerome W. Virden
Pat & William Ward
Kim West
Whibco Inc.
Mary M. White
Jewel Williamson-Burns
Sarah Willig
Lisa Wool
3 J Blue Trio

Up to \$99

Anonymous (9)
Ann S. Alexander
Shaun & Jamie Bailey
Roberta Batorsky
Christopher F. Baum
Robert C. Benson
Jineen Boyle
John Brady
Haley Burns & David Karas

William Callahan
John Cheezum Jr.
Marianne B. Cinaglia
Samantha Clem
Kimberly C. Cloud
Deborah Costas
Sharon & Dan Crampton
Liz Dailey
Eric Delss
Melonie Ettinger
Thomas B. Evans Jr.
Kaitie Evers
David Fiedler
Richard & Lorriane Fleming
Annette M. Fletcher
Carl B. Ford
Lou Gallo
Elaine Goodman
Lisa Guercio
Robert W. Horsey
Peter Horthy
Martha Hudson
Sean Hutton
Eleanor Kelly
Kenneth Koch
Sue & Bernhard Kofort
Anthony Kopke
Cecilia M. Kunath
John Lea
Ryan Liscinski
Suzanne S. Marinell
Matt Marquardt PE
Hans Medlarz
Walter Mugdan
Susan Myerov
Nancy Nyamumbo
Kerry O'Connell
Dr. Harry & Mrs. Nancy Otto
Dennis Palmer
Lynn Pokrifka
Irene Y. Purdy

Nick & Joann Rafferty
Roger J. Rider
Ann Faulds & Christopher
Robinson
Albert & Lois Rossetti
Barbara Ross
June Satterfield
Linda Margolies Schrading
William E. Toffey

In Memory of John T. & Martha Ann Mattern Grey

David Mattern & Charlotte Crystal

In Honor of LeeAnn Haaf

Howard & Gail Schaevitz

In Memory of Dr. Susan S. Kilham

In Honor of Danielle Kreeger

Anonymous

In Memory of Peter Pappas

Mr. Edward Pappas

In Memory of Rebecca Shenton's Father

Jill Clark

In Memory of Carl N. Schuster, Jr.

George & Susan Shuster

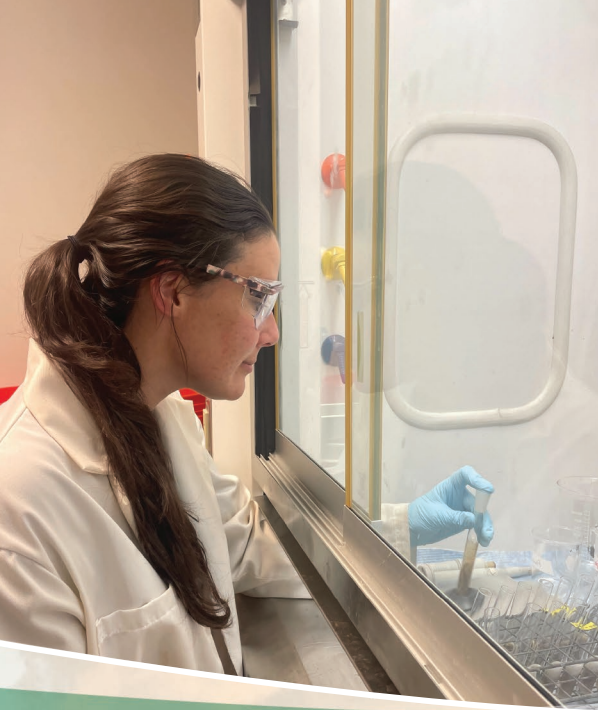
In Honor of Joe Tarsavage

Elizabeth Horsey
Danielle Kreeger
Rob Monahan

Background Photo
by Alexis Mears



Volunteers pick up litter
during the SAN Scrub
and Pub.



PARTNERSHIP for the DELAWARE ESTUARY STAFF

Chesa Blom, Philadelphia Community Coordinator
Kendra Bober, Delaware Community Coordinator
Haley Burns, Delaware Estuary Program Coordinator
Kurt Cheng, Senior Science Manager
Marguerite DiGiorgio, Engagement Assistant Coordinator
Kaitie Evers, Engagement and SAN Coordinator
Kelly Faller, Estuary Science Coordinator
Karen Forst, Assistant Director of Grants
Matthew Gentry, Assistant Science Manager
LeeAnn Haaf, Ph.D., Assistant Director of Estuary Science
John Harrod, Engagement Director
Davian Higgins-Reeves, Staff Accountant

Elizabeth Horsey, Development Director
Kathy Klein, Executive Director
Jessica Klinkam, Restoration Specialist
Danielle Kreeger, Ph.D., Senior Science Director
Kate Layton, Communications Coordinator
Jonetta Lucas, Finance Director
Martha Maxwell-Doyle, Programs Director
Leah Morgan, Estuary Science Coordinator
Nancy Nyamumbo, Staff Accountant
Kerry O'Connell, Development Coordinator
Meghan Rogalus, Schuylkill Action Network (SAN) Manager
Ella Rothermel, Urban Resilience Assistant Manager
Jana Savini, Coastal Collaboration Coordinator
Cyndi Slothour, Office Administrator
Ken Williamson, Restoration Specialist
Brian Yerger, Business and Operations Director

DELAWARE ESTUARY PROGRAM COMMITTEES

2023 STEERING COMMITTEE

Chair: Katrina Angarone, Assistant Commissioner for Watershed and Land Management – New Jersey Department of Environmental Protection
Bevin Buchhesiter, Acting Deputy Secretary of Water Programs – Pennsylvania Department of Environmental Protection
Nicole Brown, Chair – Partnership for the Delaware Estuary Board of Directors
Marc Cammarata, Deputy Water Commissioner – Philadelphia Water Department
Shawn M. Garvin, Secretary – Delaware Department of Natural Resources and Environmental Control
Javier Laureano, Ph.D., Director of Clean Water Division – U.S. Environmental Protection Agency, Region 2
Adam Ortiz, Regional Administrator – U.S. Environmental Protection Agency, Region 3
Steve Tambini, Executive Director – Delaware River Basin Commission

2023 ESTUARY IMPLEMENTATION COMMITTEE

Chair: Kathy Klein, Partnership for the Delaware Estuary
Elizabeth Butler, U.S. Environmental Protection Agency, Region 2
Sandra Insalaco, Pennsylvania Department of Environmental Protection
Lynette Lurig, New Jersey Department of Environmental Protection
Catherine Magliocchetti, U.S. Environmental Protection Agency, Region 3
Rachael Phillos, Delaware Department of Natural Resources and Environmental Control
Chad Pindar, Delaware River Basin Commission
William Whalon, Philadelphia Water Department

2023 SCIENCE AND TECHNICAL ADVISORY COMMITTEE

LEADERSHIP

Chair: Dorina Frizzera – Getting to Resilience, LLC
Vice Chair: Gregory Lech – Pennsylvania Fish and Boat Commission, Division of Environmental Services
Science Advisor: LeeAnn Haaf, Ph.D. – Partnership for the Delaware Estuary
Ex Officio Representative: Kathy Klein – Partnership for the Delaware Estuary, EIC Chair

STANDING REPRESENTATIVES

Lance Butler – Philadelphia Water Department
Randall Brown – Pennsylvania Department of Environmental Protection
Sheila Eyler – United States Fish and Wildlife Service
Danielle Kreeger, Ph.D. – Partnership for the Delaware Estuary
Joshua Moody, Ph.D. – New Jersey Department of Environmental Protection
Alison Rogerson – Delaware Department of Natural Resources and Environmental Control
Kelly Somers – U.S. Environmental Protection Agency, Region 3
Namsoo S. Suk, Ph.D. – Delaware River Basin Commission, Monitoring Advisory Committee, & Toxics Advisory Committee

ELECTED REPRESENTATIVES

Lesley Baggett, Ph.D. – AKRF
Laura Craig, Ph.D. – Engineering and Land Planning Associates, Inc.
Ronald B. Heun, Jr. – PSEG Nuclear, LLC
Doug Janiec – Sovereign Consulting, Inc.
Daphne Munroe, Ph.D. – Rutgers University, Haskin Shellfish Research Laboratory
Andrew Reif – United States Geological Survey
Pete Rowe – New Jersey Sea Grant Consortium
David Smith – United States Geological Survey
Bart Wilson – United States Fish and Wildlife Service



Partnership for the Delaware Estuary
110 S. Poplar Street, Suite 202, Wilmington, DE 19801
(302) 655-4990 • www.DelawareEstuary.org

The Partnership for the Delaware Estuary, host of the Delaware Estuary Program, leads collaborative, science-based efforts to improve the tidal Delaware River and Bay, which covers portions of Delaware, New Jersey, and Pennsylvania.